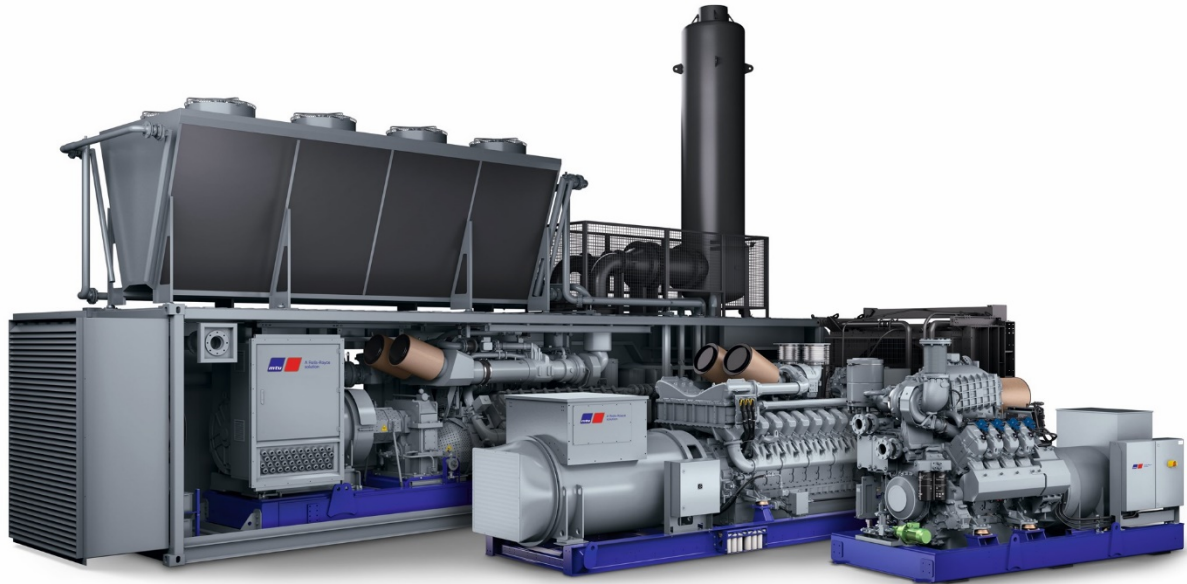




Stock #: 224065



mtu 6R0150 DS250 T3

Technical Specification And Scope of Supply

mtu 6R0150 DS250 T3

Customer: INDEL Power Group LLC

Quotation Date: 7. November 2022

www.mtu-solutions.com



1. Technical Specification

Product Type	DG06RJ150A2N mtu 6R0150 DS250 T3
Application Group	3D

Power per genset (ISO 8528)	250 kWel
Derated Power per genset (ISO 8528)	250 kWel
Engine speed	1800 rpm
Intake air temperature	40 deg C
Altitude	400 m

Requirements

Frequency	60 Hz
Fuel Type	Diesel
Generator voltage	208 V
Engine Model	JD6090HF484 (24Volts)
Grid guideline	No requirements

Selection Criteria

Phase	3 Phase
Unit Specification	UL2200 Certification
IBC Certification	Without
HCAI Certification	Without
Exhaust Emissions (EPA)	64 - EPA Stationary EMERG T3 (40CFR60)
Radiator Design Temperature	50 C
Temp Rise	130 °
Full Load Amps	867 A
Generator Model	432/6210
Generator Wire Qty	12 Wire
Generator Wire Configuration	WYE
OPU/HSD	Level 0 - OPU Housing Ready Skid
Control panel	With Control Panel
Circuit Breaker Options	Triple Circuit Breaker
Breaker Wire Color Scheme	Standard Breaker Wire Color Scheme
Country of Operation	US -United States of America
Emission cert. Authority	18 - US EPA US EPA Agency

mtu

A Rolls-Royce solution

MODEL:

1

SERIAL:

2

RATING:

3

ENGINE:

4

RPM:

5

Hz:

6

kW:

7

kVA:

8

VOLTS

9

AMPS

10

PH

11

PF

12

WIRE CONFIG:

13

TEMP. RISE / AMB. (°C):

14

/ 40

MAX. UNBALANCED LOAD:

I₂ = 10%

DIESEL FUEL:

PER SPECIFICATIONS A001064/05E

MAX. INLET FUEL FLOW:

1620 (428) L/h (gal/h)

www.mtu-solutions.com

1	mtu 6R0150 DS250 T3	-
2	--	-
3	3D	-
4	JD6090HF484 (24Volts)	-
5	1800	RPM
6	60	Hz
7	250	kWe
8	312	kVA
9	208	V
10	867	A
11	3	PH
12	0.8	PF
13	WYE	-
14	130	°C

2. Scope of Supply

Specification SYSTEM

System Description

Unit Specification	UL2200 Certification
Enclosure Type	Level 0 - OPU Housing-Ready Skid
Controls	With Control Panel
Circuit Breaker	Triple Circuit Breaker
Breaker Wire Color Scheme	Standard Breaker Wire Color Scheme
Dimensional Drawings	• XZG3000100130
Standard Electrical Drawings	• XZG30K0000028
Electrical Generator Drawings	• XZG30K0000048
Electrical Option Sheet	• XZG30K0000037
Drawings	
Fuel Tank Drawings	• XZG3000100143
Circuit Breaker Drawings	• XZG30K0000032
Control Panel Drawings	• XZG3064400019
Customer Connection Drawings	• XZG30K0000033
Vibration Isolation Drawings	• XZG3000100141

ENGINE

Engine Genset

Engine Model	JD6090HF484 (24Volts)
--------------	-----------------------

COOLING

Cooling Package

Radiator Design Temp	50 C
----------------------	------

PREHEATING

Electric Operated Preheating

Coolant Preheating	<p>Coolant Preheater</p> <ul style="list-style-type: none">• -20 Deg F Coolant Preheater (208V 1PH - 2500W)• Model: CB125810-200 Qty 1 <p>*Water Heater Wired to the Distribution Panel (If Distribution Panel is Selected)</p>
--------------------	--

STARTING

Starting Electric

Starting Batteries	<p>Starting Battery (Group 31), Cables & Battery Rack</p> <ul style="list-style-type: none">• Battery Rack mounted and installed• Battery Group 31 Starting Battery filled with acid (Qty 2)
--------------------	---

Battery Charger	<p>Battery Charger MicroGenius 2 10A</p> <ul style="list-style-type: none">• 300W• 10 Amp• 24V• NFPA 110• M3-22-1210-E
-----------------	--

Battery Charger Mounting	<p>Battery Charger Mounted & AC/DC Wired</p> <ul style="list-style-type: none">• This option will be factory-wired to distribution panel (if applicable)
--------------------------	--

AIR INTAKE

Air Intake Filters

Air Intake

Air Filter (Standard) MTU Air Filter
• P/N: SUA86885 Qty 1

Air Restriction Indicator

Air Restriction Indicator

FUEL

Fuel Systems

Fuel Type

Diesel

Fuel Filters

Fuel Water Separator

Fuel Water Separator Standard (Single)

Fuel Tanks

Fuel Tank Type

Extended Fuel Tank

Fuel Tank Capacity

24 Hour

Selected Fuel Tank

530 Gallon Extended Sub Base Fuel Tank

Spill Fill Box

Fuel Tank Spill Fill

Overfill Protection

Without

Fuel Tank Ventilation

Standard Vents

Leak Switch

Standard Leak Switch

Tank Level Alarm Panel

Without

EXHAUST

Exhaust System

Exhaust Silencer

Shipped Loose Critical Grade Silencer 6"
• Provides 25-34dB of sound attenuation

- Silencer Model: JCS-06-200387 (Qty 1)

GENERATOR

Generator

Generator Model
Number
Generator Accessories

Base Model: 432/6210

PMG

PMG with DVR 2400

- True RMS Sensing - One or Three Phase Connect. Senses 100 to 600 volts $\pm 10\%$ at 50/60 Hertz. Patented circuitry senses true RMS voltage rather than average for superior load regulation.

Generator Outletbox

Convenience
Receptacle

Unit Includes One (1) Convenience Receptacle
* This option will be factory-wired to the distribution panel (if selected)

CONTROLS

Genset Control Panel

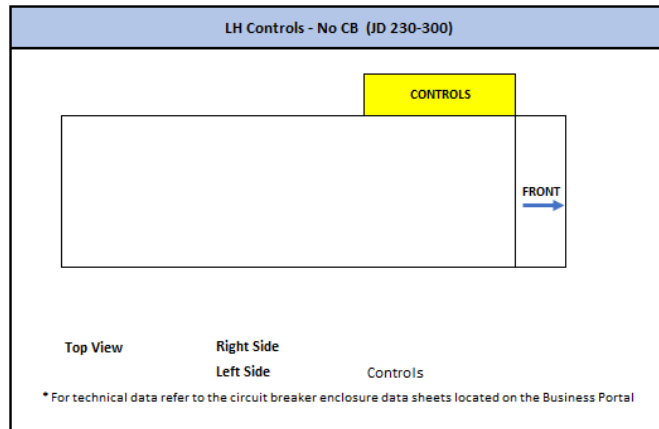
Configured Control
Panel
Series

MGC-2020

- MTU Onsite Energy's Digital Genset Controller MGC-2000 series is a highly advanced integrated generator set control system. The MGC-2000 series is perfectly focused, combining rugged construction and microprocessor technology to offer a product that will hold up to almost any environment and flexible enough to meet your application's needs. This device provides generator set control, transfer switch control, metering, protection, and programmable logic in a simple, easy-to-use, reliable, rugged, and cost effective package.

Control Panel Mounting

Control Panel Unit Mounted LH Side



Paralleling

Without

CEM Module

Contact Expansion Module (CEM)

- The CEM is a remote device that provides additional MGC contact inputs and outputs giving the user flexibility to use the same model MGC generator set controller for simple or more complicated applications that require contact functionality or duplication of contacts for remote annunciation.

Modbus

ModBus RTU

- ModBus RTU connects the MGC to Programmable Logic Controllers by means of communication transmission over serial lines (RS485).

Remote E-Stop

Without

BACnet Converter

Without

Ground Fault Protection

Without

Remote Annunciator

RDP-110c Annunciator Panel

- The RDP-110c is a remote annunciation device used in conjunction with the MGC family of digital generator set controllers to provide remote annunciation of the emergency standby generator system. This panel allows for two programmable alarms, two programmable pre-alarms, and is

compatible with NFPA 110. The MGC detects an alarm or pre-alarm condition and communicates via RS-485 to the RDP-110c.

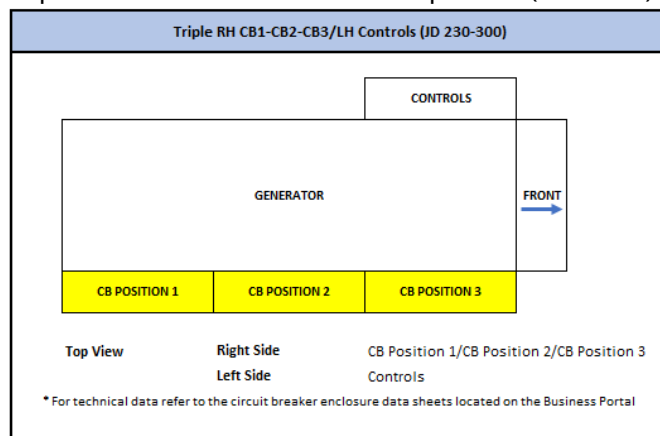
- Unit can be flush or surface mounted.

CIRCUIT BREAKER

Circuit Breaker 1

Circuit Breaker Enclosure Orientation

Triple CB enclosure orientation option 1 (RH MTD)



Trip Type

LSI Breaker Trip

- LSI breakers provide protection from long time overload, short time overload and instantaneous short circuit events. Specific overload current values and time delays vary with breaker type and trip unit.

Rating

100%

Spring Charging Motor (MMM) ERMS

Without

Without ERMS

Amperage List

400 Amps

Selected Circuit Breaker 1:

400 Amp 3 Pole 100% LSI CB SQ-D
LGL36400CU33X

Circuit Breaker 1 Accessories

Shunt Trip (MX1)	Circuit Breaker SQ-D Shunt Trip (MX1) H/J/LD-Frame
------------------	--

Circuit Breaker 2

Rating	100%
--------	------

Trip Type	LSI Breaker Trip <ul style="list-style-type: none">• LSI breakers provide protection from long time overload, short time overload and instantaneous short circuit events. Specific overload current values and time delays vary with breaker type and trip unit.
-----------	--

Spring Charging Motor (MMM)	Without
-----------------------------	---------

ERMS	Without ERMS
------	--------------

Amperage List	200 Amps
---------------	----------

Selected Circuit Breaker 2:	200 Amp 3 Pole 100% LSI CB SQ-D JDL36250CU33X
-----------------------------	---

Circuit Breaker 2 Accessories

Shunt Trip (MX1)	Circuit Breaker SQ-D Shunt Trip (MX1) H/J/LD-Frame
------------------	--

Circuit Breaker 3

Rating	100%
--------	------

Trip Type	LSI Breaker Trip <ul style="list-style-type: none">• LSI breakers provide protection from long time overload, short time overload and instantaneous short circuit events. Specific overload current values and time delays vary with breaker type and trip unit.
-----------	--

Spring Charging Motor (MMM)	Without
ERMS	Without ERMS
Amperage List	150 Amps
Selected Circuit Breaker	150 Amp 3 Pole 100% LSI CB SQ-D HDL36150CU33X
3: Circuit Breaker 3 Accessories	
Shunt Trip (MX1)	Circuit Breaker SQ-D Shunt Trip (MX1) H/J/LD-Frame
Distribution Panel	
Distribution Panel	Without
PAINTING	
Painting	
Paint Color	Corporate Grey
BASEFRAME	
Mounts Baseframe	
Selected Vibration Isolation	<p>Seismic Spring Isolators</p> <ul style="list-style-type: none"> • Freestanding, open-spring isolators designed to be used in docile environments (limited seismic activity, low wind loading) where customer wants enhanced level of vibration isolation. • Spring Model(s): RJC-1430 • Notice: Selected springs are rated from the factory for this unit's specific configuration. If modifications are made to this unit outside of the MTU factory the rating of the springs will need to be re-evaluated and may result in additional costs.

WARRANTY

Warranty

Warranty Terms

5 year 3000 Hour Standby Comprehensive
Warranty

SHIPPING & STORAGE

Freight

Shipping Bag

With Shipping Bag

Delivery Type

Ship Unit Wet

DOCUMENTATION

Manuals

Standard Documentation

Manual English USB

FUNCTIONAL TESTING

Acceptance Testing

Standard Commercial Test

With Standard Commercial Test