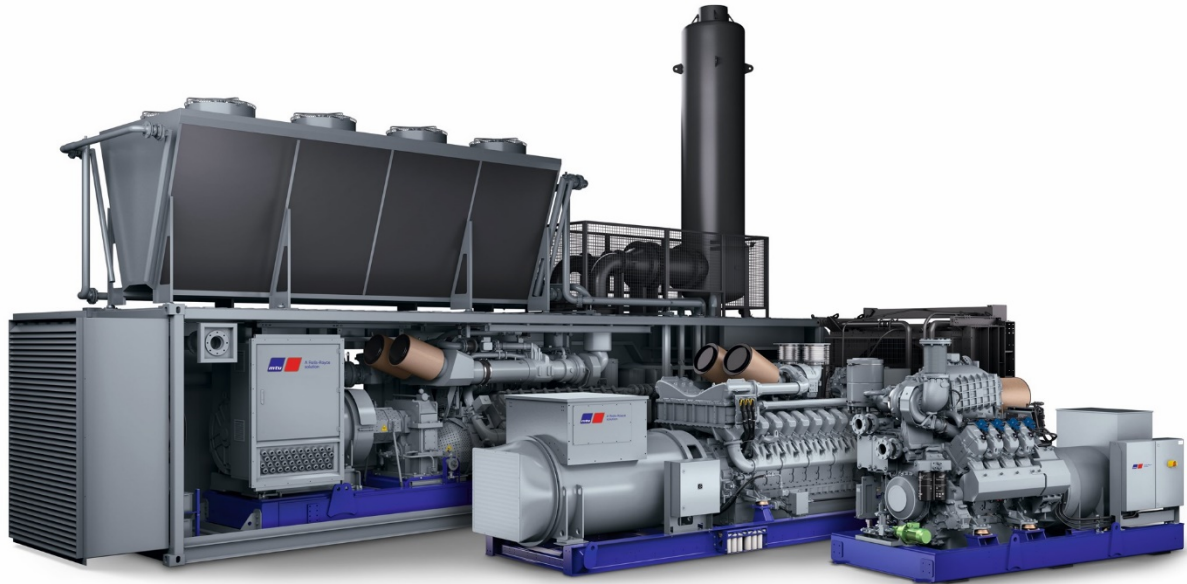




Stock #: 241641



mtu 4R0063 GS40

Technical Specification And Scope of Supply

mtu 4R0063 GS40

Customer: INDEL Power Group LLC

Quotation Date: 22. December 2025

www.mtu-solutions.com

1. Technical Specification

	GG04RF063A3N
Product Type	mtu 4R0063 GS40
Application Group	3D

Power as per MTU Sales Program


Power per genset (ISO 8528)	40 kWel
Natural Gas Power Rating	40 kWel
Liquid Propane Power Rating	0 kWel
Engine speed	1800 rpm
Intake air temperature	40 deg C
Altitude	400 m

Requirements

Frequency	60 Hz
Fuel Type	Natural Gas
Generator voltage	208 V
Engine Model	mtu SI 2.5LT (12Volts)
Grid guideline	No requirements

Selection Criteria

Phase	3 Phase
Unit Specification	UL2200 Certification
IBC Certification	Without
HCAI Certification	Without
Exhaust Emissions (EPA)	A5 - EPA Stationary EMERG (40CFR60) SI
Radiator Design Temperature	50 C
Temp Rise	130 °
Full Load Amps	139 A
Generator Model	285/1700
Generator Wire Qty	12 Wire
Generator Wire Configuration	WYE
OPU/HSD	Level 3 - Maximum Sound Attenuation Enclosure
Control panel	With Control Panel
Circuit Breaker Options	Single Circuit Breaker
Breaker Wire Color Scheme	Standard Breaker Wire Color Scheme
Country of Operation	US -United States of America
Emission cert. Authority	18 - US EPA US EPA Agency



A Rolls-Royce
solution

MODEL: 1

SERIAL: 2

RATING: 3

ENGINE: 4

RPM: 5 Hz: 6

kW: 7 kVA: 8

VOLTS 9

AMPS 10

PH 11

PF 12

WIRE CONFIG: 13

TEMP. RISE / AMB. (°C): 14 / 40

MAX. UNBALANCED LOAD: I₂ = 10%

15

FUEL TYPE	INLET PRESSURE (in H ₂ O)	MAX. INPUT (Btu/H)	MAX. INLET FLOW
<input type="checkbox"/> NATURAL GAS	7-11		
<input type="checkbox"/> LP GAS	7-11		
<input type="checkbox"/> LP LIQUID	7-11		

Mfg. Date:

www.mtu-solutions.com

1	mtu 4R0063 GS40	-
2	--	-
4	mtu SI 2.5LT (12Volts)	-
5	1800	RPM
6	60	Hz
7	40	kWe
8	50	kVA
9	208	V
10	173	A
11	3	PH
12	0.8	PF
13	WYE	-
14	130	°C
15	Natural Gas	-

2. Scope of Supply

Specification			QTY
SYSTEM			
System Description			
Unit Specification	UL2200 Certification		1
Enclosure Type	LEVEL 3		1
Controls	With Control Panel		1
Circuit Breaker	Single Circuit Breaker		1
Breaker Wire Color Scheme	Standard Breaker Wire Color Scheme		1
Dimensional Drawings	• XZG3100100085 • XZG3100100086		1
Fuel System Drawings	Fuel System Single NG or LP Vapor (Not Base Connected) • XSG31080.00009 mtu SI 2.5L		1
Standard Electrical Drawings	• XZG3164400003 • XZG31K0000011		1
Control Panel Drawings	• XZG3164400013		1
Circuit Breaker Drawings	• XZG3164400001		1
Option Sheet Drawings	• XZG3164400008		1
ENGINE			
Engine Genset			
Engine Model	mtu SI 2.5LT (12Volts)		1
COOLING			
Cooling Package			
Radiator Design Temp	50 C		1
PREHEATING			

Electric Operated Preheating

Coolant Preheating	Coolant Preheater • -20 Deg F Coolant Preheater (120V 1PH - 1800W) • Model: TPS181GT10-000 Qty 1 *Water Heater Wired to the Distribution Panel (If Distribution Panel is Selected)	1
--------------------	---	---

STARTING

Starting Electric

Starting Batteries	Starting Battery w/Acid, Cables & Battery Rack • Battery Rack mounted and installed • Battery Group 24 Starting Battery filled with acid (Qty 1)	1
Battery Warming Plate	Battery Warming Plate	1
Battery Charger	Battery Charger MicroGenius 10A • 180W • 10 Amp • 12V • NFPA 110	1
Battery Charger Mounting	Battery Charger Mounted & AC/DC Wired • This option will be factory-wired to distribution panel (if applicable)	1

AIR INTAKE

Air Intake Filters

Air Intake System	Air Filter (Standard) mtu Air Filter • P/N: SUA77166 Qty 1	1
Air Restriction Indicator	Air Restriction Indicator	1

FUEL

Fuel Systems

Fuel System	Single Fuel NG/LP Vapor	1
Fuel Type	Natural Gas	0

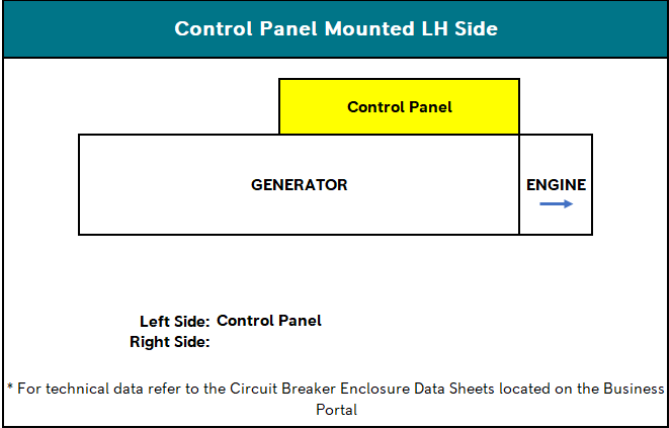
Fuel Filters

Dry Fuel Strainer	Dry Fuel Strainer	1
EXHAUST		
Exhaust System		
Exhaust Silencer	Unit-Mounted Silencer • Silencer Model: JCS-02-200381 (Qty 1)	1
GENERATOR		
Generator		
Generator Model Number	Base Model: 285/1700	1
Generator Accessories		
PMG	PMG with DVR 2400 • True RMS Sensing - One or Three Phase Connect. Senses 100 to 600 volts $\pm 10\%$ at 50/60 Hertz. Patented circuitry senses true RMS voltage rather than average for superior load regulation.	1
CONTROLS		
Genset Control Panel		
Configured Control Panel Series	MGC-2020 • Rolls Royce Power Systems Digital Generator Controller MGC-2000 Series is a highly advanced integrated generator set control system. The MGC-2000 Series is perfectly focused, combining rugged construction and microprocessor technology to offer a product that will hold up to almost any environment and flexible enough to meet your application's needs. This device provides generator set control, transfer switch control, metering, protection, and programmable logic in a simple, easy-to-use, reliable, rugged, and cost effective package.	1

Control Panel Mounting

Control Panel Mounted LH Side

1



Modbus

Without

0

Remote E-Stop

Without

0

BACnet Converter

Without

0

Ground Fault Protection

Without

0

Extension Harness

Without

0

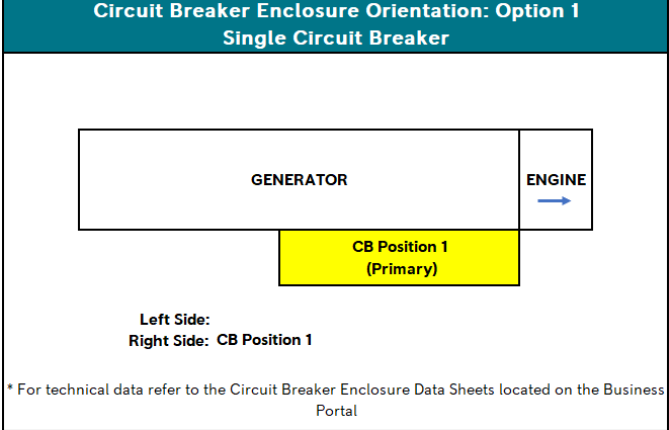
CIRCUIT BREAKER

Circuit Breaker 1

Circuit Breaker Enclosure Orientation

Single CB Enclosure Orientation: Option 1

1



Trip Type	LSI Breaker Trip • LSI breakers provide protection from long time overload, short time overload and instantaneous short circuit events. Specific overload current values and time delays vary with breaker type and trip unit.	0
Rating	100%	0
Amperage List	150 Amps	1
Selected Circuit Breaker 1:	150 Amp 3 Pole 100% LSI CB SQ-D HDL36150CU33X	1
Distribution Panel		
Distribution Panel	Without	0
ENCLOSURE		
Housing		
Enclosure Material	Level 3 Aluminum • Level 2 enclosure with air exhaust scoop with UL 94 HF-1 compliant, 1.5" thick sound attenuated foam insulation installed where applicable.	1
Sound Attenuation Kit	With	1
PAINTING		
Painting		
Paint Color	Corporate Grey	1
BASEFRAME		
Mounts Baseframe		
Vibration Isolation	Pad Isolators • 1/4" thick elastomeric pad in rectangular shape placed under the base frame at each of the pre-drilled isolator mounting holes. • P/N: SUA63015	1

WARRANTY

Warranty

Warranty Terms	2 Year 3000 Hour Standby Warranty	1
----------------	-----------------------------------	---

SHIPPING & STORAGE

Freight

Shipping Bag	With Shipping Bag	1
--------------	-------------------	---

Delivery Type	Ship Unit Wet	1
---------------	---------------	---

DOCUMENTATION

Manuals

Standard Documentation	Manual English USB	1
------------------------	--------------------	---

FUNCTIONAL TESTING

Acceptance Testing

Standard Commercial Test	With Standard Commercial Test	1
--------------------------	-------------------------------	---