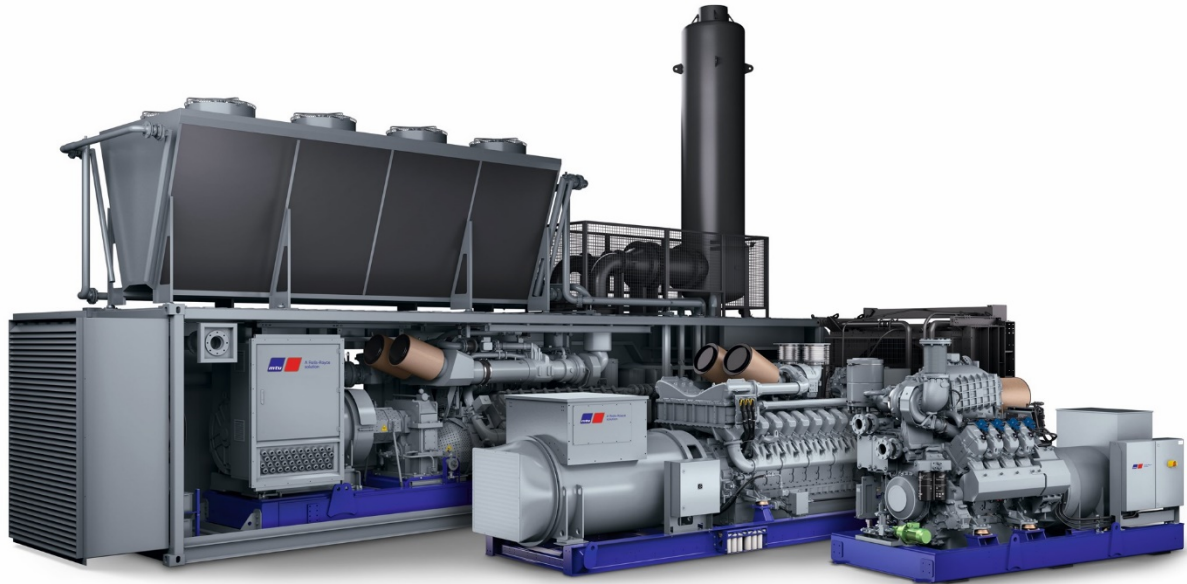




Stock #: 248100



mtu 6R0150 DS300 T3

Technical Specification And Scope of Supply

mtu 6R0150 DS300 T3

Customer: INDEL Power Group LLC

Quotation Date: 12. June 2024

www.mtu-solutions.com



1. Technical Specification

Product Type mtu 6R0150 DS300 T3
Application Group 3D

Power as per MTU Sales Program

Power per genset (ISO 8528) 300 kWel
Derated Power per genset (ISO 8528) 300 kWel
Engine speed 1800 rpm
Intake air temperature 25 deg C
Altitude 100 m

Requirements

Frequency 60 Hz
Fuel Type Diesel
Generator voltage 480 V
Engine Model JD6090HFG86 (24Volts)
Grid guideline No requirements

Selection Criteria

Phase 3 Phase
Unit Specification UL2200 Certification
IBC Certification Without
HCAI Certification Without
Exhaust Emissions (EPA) 64 - EPA Stationary EMERG T3 (40CFR60)
Radiator Design Temperature 50 C
Temp Rise 130 °
Full Load Amps 451 A
Generator Model 432/6212
Generator Wire Qty 12 Wire
Generator Wire Configuration WYE
OPU/HSD Level 1 - Standard Enclosure
Control panel With Control Panel
Circuit Breaker Options Single Circuit Breaker
Breaker Wire Color Scheme Standard Breaker Wire Color Scheme
Country of Operation US -United States of America
Emission cert. Authority 18 - US EPA US EPA Agency

mtu

A Rolls-Royce solution

MODEL:

1

SERIAL:

2

RATING:

3

ENGINE:

4

RPM:

5

Hz:

6

kW:

7

kVA:

8

VOLTS

9

AMPS

10

PH

11

PF

12

WIRE CONFIG:

13

TEMP. RISE / AMB. (°C):

14

/ 40

MAX. UNBALANCED LOAD:

I₂ = 10%

DIESEL FUEL:

PER SPECIFICATIONS A001064/05E

MAX. INLET FUEL FLOW:

1620 (428) L/h (gal/h)

www.mtu-solutions.com

1	mtu 6R0150 DS300 T3	-
2	--	-
4	JD6090HFG86 (24Volts)	-
5	1800	RPM
6	60	Hz
7	300	kWe
8	375	kVA
9	480	V
10	451	A
11	3	PH
12	0.8	PF
13	WYE	-
14	130	°C

2. Scope of Supply

Specification		QTY
SYSTEM		
System Description		
Unit Specification	UL2200 Certification	1
Enclosure Type	LEVEL 1	1
Controls	With Control Panel	1
Circuit Breaker	Single Circuit Breaker	1
Breaker Wire Color Scheme	Standard Breaker Wire Color Scheme	1
Dimensional Drawings	• XZG3000100131	1
Engine Electrical Drawings	• XZG30K0000028	1
Electrical Generator Drawings	• XZG30K0000048	1
Electrical Option Sheet	• XZG30K0000037	1
Drawings		
Fuel Tank Drawings	• XZG3000100143	1
Circuit Breaker Drawings	• XZG30K0000032	1
Control Panel Drawings	• XZG3064400019	1
Customer Connection Drawings	• XZG30K0000033	1
ENGINE		
Engine Genset		
Engine Model	JD6090HFG86 (24Volts)	1

COOLING

Cooling Package

Radiator Design Temp	50 C	1
-----------------------------	------	---

PREHEATING

Electric Operated Preheating

Coolant Preheating	Coolant Preheater <ul style="list-style-type: none">• -20 Deg F Coolant Preheater (208V 1PH - 2500W)• Model: CB125810-200 Qty 1*Water Heater Wired to the Distribution Panel (If Distribution Panel is Selected)	1
---------------------------	--	---

STARTING

Starting Electric

Starting Batteries	Starting Battery (Group 31), Cables & Battery Rack <ul style="list-style-type: none">• Battery Rack mounted and installed• Battery Group 31 Starting Battery filled with acid (Qty 2)	1
Battery Charger	Battery Charger MicroGenius 2 10A <ul style="list-style-type: none">• 300W• 10 Amp• 24V• NFPA 110• M3-22-1210-E	1
Battery Charger Mounting	Battery Charger Mounted & AC/DC Wired <ul style="list-style-type: none">• This option will be factory-wired to distribution panel (if applicable)	1

AIR INTAKE

Air Intake Filters

Air Intake	Air Filter (Standard) mtu Air Filter <ul style="list-style-type: none">• P/N: SUA86885 Qty 1	1
-------------------	--	---

Air Restriction Indicator	Air Restriction Indicator	1
FUEL		
Fuel Systems		
Fuel Type	Diesel	1
Fuel Filters		
Fuel Water Separator	Without	0
Fuel Tanks		
Fuel Tank Type	Non-Extended Fuel Tank	1
Fuel Tank Capacity	24 Hour	1
Selected Fuel Tank	530 Gallon Non-Extended Sub Base Fuel Tank ** Tank is 9" past end of frame	1
Overfill Protection	Without	0
Fuel Tank Ventilation	Standard Vents	1
Leak Switch	Leak Switch Florida DEP EQ Certification: EQ-832	1
Tank Level Alarm Panel	Without	0
EXHAUST		
Exhaust System		
Exhaust Silencer	Unit-Mounted Silencer • Silencer Model: JIIJ0Z-06SB-1-18060014 (Qty 1)	1

GENERATOR

Generator

Generator Model Number	Base Model: 432/6212	1
------------------------	----------------------	---

Generator Accessories

PMG	PMG with DVR 2400 • True RMS Sensing - One or Three Phase Connect. Senses 100 to 600 volts $\pm 10\%$ at 50/60 Hertz. Patented circuitry senses true RMS voltage rather than average for superior load regulation.	1
-----	---	---

Generator Strip Heater	250 Watt Generator Strip Heater • Strip heater mounted permanently in the generator winding to prevent condensation in the generator. *Note* - This option will be factory-wired to the distribution panel (if selected)	1
------------------------	--	---

CONTROLS

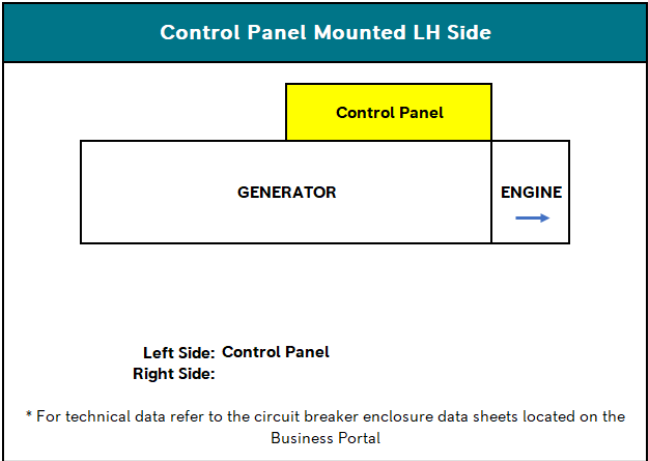
Genset Control Panel

Configured Control Panel Series	MGC-2020 • Rolls Royce Power Systems Digital Generator Controller MGC-2000 Series is a highly advanced integrated generator set control system. The MGC-2000 Series is perfectly focused, combining rugged construction and microprocessor technology to offer a product that will hold up to almost any environment and flexible enough to meet your application's needs. This device provides generator set control, transfer switch control, metering, protection, and programmable logic in a simple, easy-to-use, reliable, rugged, and cost effective package.	1
---------------------------------	---	---

Control Panel
Mounting

Control Panel Unit Mounted LH Side

1



Paralleling

Without

0

4-Relay Package

4-Relay Option

- The 4-relay board includes (4) 10 Amp form C relays customizable for user defined functionality requirements.
- Standard outputs are as follows:
 - Engine Run
 - Engine Fail
 - Minor Alarm

1

Remote E-Stop

Remote E-Stop

1

ProtoNode
Solution
Ground Fault
Protection
Remote
Annunciator

Without

0

Without

0

RDP-110c Annunciator Panel

- The RDP-110c is a remote annunciation device used in conjunction with the MGC family of digital generator set controllers to provide remote annunciation of the emergency standby generator system.
- This panel allows for two programmable alarms, two programmable pre-alarms, and is compatible with NFPA 110. The MGC detects an alarm or pre-alarm condition and communicates via RS-485 to the RDP-110c.
- Unit can be flush or surface mounted.

1

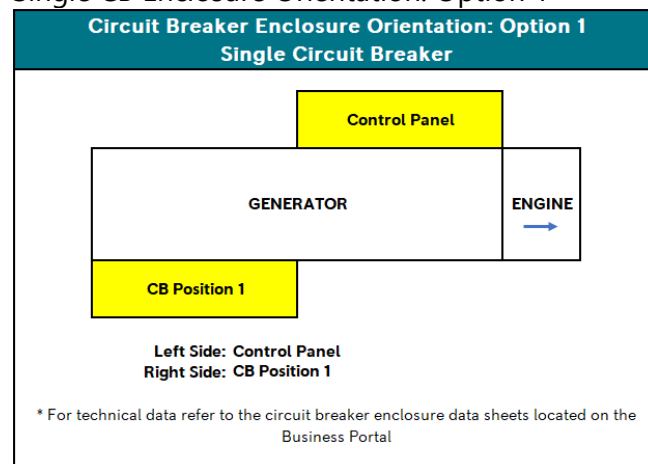
CIRCUIT BREAKER

Circuit Breaker Position 1

Circuit Breaker
Enclosure
Orientation

Single CB Enclosure Orientation: Option 1

1



Trip Type

LSI Breaker Trip

0

- LSI breakers provide protection from long time overload, short time overload and instantaneous short circuit events. Specific overload current values and time delays vary with breaker type and trip unit.

Rating

100%

0

Spring Charging
Motor
(MMM)
ERMS

Without

0

Without ERMS

1

Amperage List

500 Amps

1

Selected Circuit
Breaker
1:

500 Amp 3 Pole 100% LSI CB SQ-D
PGL36060CU33A

1

Circuit Breaker Position 1 Accessories

Shunt Trip (MX1)

Circuit Breaker SQ-D Shunt Trip (MX1) H/J/LD-
Frame

1

Distribution Panel

Distribution
Panel

Without

0

ENCLOSURE

Housing			
Wind Rating	130 MPH		1
Enclosure Material	Level 1 Steel <ul style="list-style-type: none"> • Weather proof enclosure constructed of heavy gauge steel with fixed storm proof panels. • Enclosure consists of a bolted and welded construction. • Hinged, lockable double-door access on both sides of the enclosure. 		1
PAINTING			
Painting			
Paint Color	Corporate Grey		1
BASEFRAME			
Mounts Baseframe			
Selected Vibration Isolation	Pad Isolators <ul style="list-style-type: none"> • 1/4" thick elastomeric pad in rectangular shape placed under the base frame at each of the pre-drilled isolator mounting holes • P/N: SUA63015 		1
WARRANTY			
Warranty			
Warranty Terms	2 Year 3000 Hour Standby Warranty		1
SHIPPING & STORAGE			
Freight			
Delivery Type	Ship Unit Wet		1
DOCUMENTATION			
Manuals			
Standard Documentation	Manual English USB		1

FUNCTIONAL TESTING

Acceptance Testing

Standard
Commercial
Test

With Standard Commercial Test