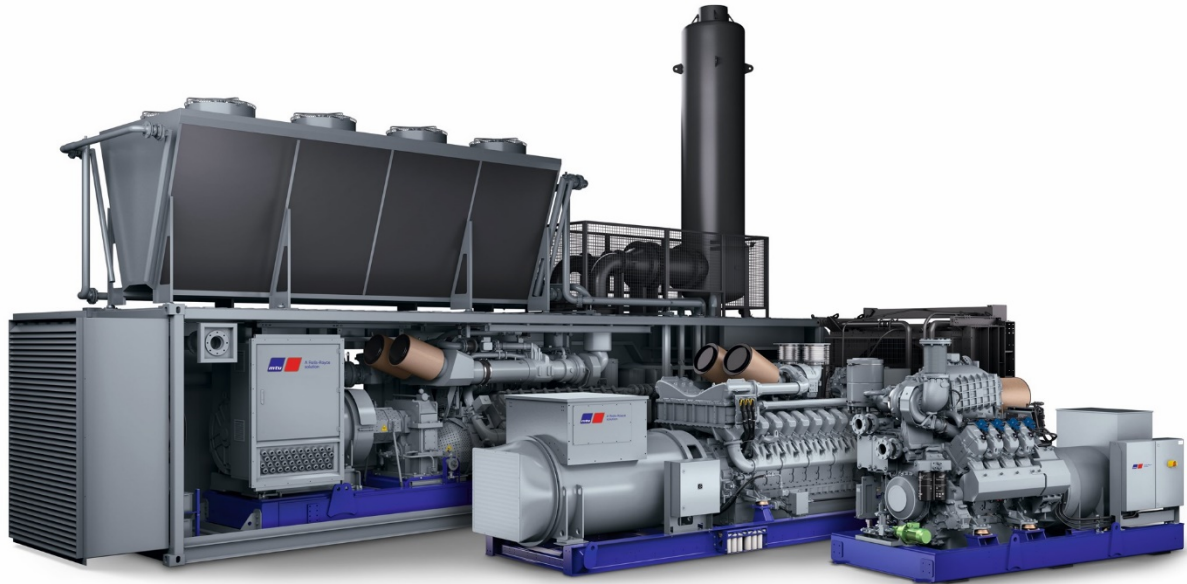




Stock #: 262935



# mtu 4R0113 DS60

Technical Specification And Scope of Supply

mtu 4R0113 DS60

Customer: INDEL Power Group LLC

Quotation Date: 10. September 2025

[www.mtu-solutions.com](http://www.mtu-solutions.com)

## 1. Technical Specification

Product Type mtu 4R0113 DS60  
Application Group 3D

### ***Power as per MTU Sales Program***

Power per genset (ISO 8528) 60 kWel  
Derated Power per genset (ISO 8528) 60 kWel  
Engine speed 1800 rpm  
Intake air temperature 25 deg C  
Altitude 100 m

### ***Requirements***

Frequency 60 Hz  
Fuel Type Diesel  
Generator voltage 480 V  
Engine Model JD4045HF280 (12Volts)  
Grid guideline No requirements

### ***Selection Criteria***

Phase 3 Phase  
Unit Specification UL2200 Certification  
IBC Certification Without  
HCAI Certification Without  
Exhaust Emissions (EPA) EPA Stationary EMERG T3 (40CFR60)  
Radiator Design Temperature  
Temp Rise 80 °  
Full Load Amps 90 A  
Generator Model MXB-E 225 XB4  
Generator Wire Qty 12 Wire  
Generator Wire Configuration WYE  
OPU/HSD Level 3 - Maximum Sound Attenuation  
Enclosure  
Control panel With Control Panel  
Circuit Breaker Options Single Circuit Breaker  
Breaker Wire Color Scheme Standard Breaker Wire Color Scheme  
Country of Operation US -United States of America  
Emission cert. Authority 18 - US EPA US EPA Agency

mtu

A Rolls-Royce solution

MODEL:

1

SERIAL:

2

RATING:

3

ENGINE:

4

RPM:

5

Hz:

6

kW:

7

kVA:

8

VOLTS

9

AMPS

10

PH

11

PF

12

WIRE CONFIG:

13

TEMP. RISE / AMB. (°C):

14

/ 40

MAX. UNBALANCED LOAD:

I<sub>2</sub> = 10%

DIESEL FUEL:

PER SPECIFICATIONS A001064/05E

MAX. INLET FUEL FLOW:

1620 (428) L/h (gal/h)

www.mtu-solutions.com

1	mtu 4R0113 DS60	-
2	--	-
4	JD4045HF280 (12Volts)	-
5	1800	RPM
6	60	Hz
7	60	kWe
8	75	kVA
9	480	V
10	90	A
11	3	PH
12	0.8	PF
13	WYE	-
14	80	°C

## 2. Scope of Supply

Specification		QTY
SYSTEM		
System Description		
Unit Specification	UL2200 Certification	1
Enclosure Type	Level 3 - Maximum Sound Attenuation Enclosure	1
Controls	With Control Panel	1
Circuit Breaker	Single Circuit Breaker	1
Breaker Wire Color Scheme	Standard Breaker Wire Color Scheme	1
Dimensional Drawings	• XZG3000100201• XZG3000100202	1
Engine Electrical Drawings	• XZG30K0000054	1
Electrical Generator Drawings	• XZG3200100012	1
Electrical Option Sheet Drawings	• XZG30K0000052	1
Fuel Tank Drawings	• XZG3000100199	1
Circuit Breaker Drawings	• XZG30K0000053	1
Control Panel Drawings	• XZG3064400081	1
ENGINE		
Engine Genset		
Engine Model	JD4045HF280 (12Volts)	1
Engine Accessories		
Isochronous Governor	Isochronous Governor	1
COOLING		
Cooling Package		
Cooling Package	50 Deg C Cooling System	1

## PREHEATING

### Electric Operated Preheating

Coolant Preheating	Coolant Preheater • -20 Deg F Coolant Preheater (120V 1PH - 1500W) • Model: TPS151GT10-005 Qty 1 *Water Heater Wired to the Distribution Panel (If Distribution Panel is Selected)	1
--------------------	---------------------------------------------------------------------------------------------------------------------------------------------------------------------------------------------	---

## STARTING

### Starting Electric

Starting Batteries	Starting Battery w/Acid, Cables & Battery Rack • Battery Rack mounted and installed • Battery Cables • HP-31 Starting Battery filled with acid (Qty 1)	1
Battery Charger	Battery Charger MicroGenius 10A • 180W • 10 Amp • 12V • NFPA 110	1
Battery Charger Mounting	Battery Charger Mounted & AC/DC Wired • This option will be factory-wired to distribution panel (if applicable)	1

## AIR INTAKE

### Air Intake Filters

Air Intake	Air Filter (Standard) mtu Air Filter • P/N: SU106417 Qty 1	1
	Standard Air Filter with Restriction Indicator	1
Air Restriction Indicator	Air Restriction Indicator	1

## FUEL

### Fuel Systems

Fuel Type	Diesel	1
Fuel Tanks		

Fuel Tank Type	Extended Fuel Tank	1
Fuel Tank Capacity	48 Hour	1
Selected Fuel Tank	250 Gallon Extended Sub Base Fuel Tank	1
Spill Fill Box	Fuel Tank Spill Fill: EQ-565	1
Overfill Protection	Without	0
Fuel Tank Ventilation	Standard Vents	1
Leak Switch	Leak Switch Florida DEP EQ Certification: EQ-832	1
Tank Level Alarm Panel	Without	0

## EXHAUST

### Exhaust System

Exhaust Silencer	Unit-Mounted Silencer • Silencer Model: CPJS-35X-90020047 (Qty 1)	1
------------------	----------------------------------------------------------------------	---

## GENERATOR

### Generator

Generator Model Number	Base Model: MXB-E225XB4	1
------------------------	-------------------------	---

### Generator Accessories

PMG Kit	With PMG Kit	1
Voltage Regulator	PMG with MARK XX Regulator	1

### Generator Outletbox

Convenience Receptacle	Unit Includes One (1) Convenience Receptacle * This option will be factory-wired to the distribution panel (if selected)	1
------------------------	-----------------------------------------------------------------------------------------------------------------------------	---

## CONTROLS

### Genset Control Panel

## Configured Control Panel Series

MGC-2020

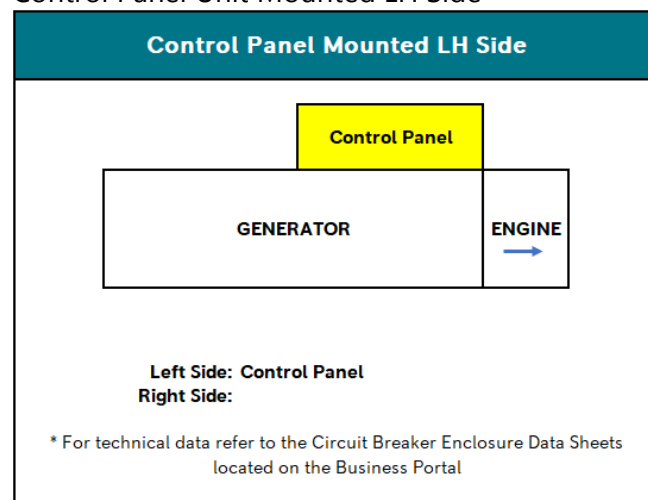
1

• Rolls Royce Power Systems Digital Generator Controller MGC-2000 Series is a highly advanced integrated generator set control system. The MGC-2000 Series is perfectly focused, combining rugged construction and microprocessor technology to offer a product that will hold up to almost any environment and flexible enough to meet your application's needs. This device provides generator set control, transfer switch control, metering, protection, and programmable logic in a simple, easy-to-use, reliable, rugged, and cost effective package.

## Control Panel Mounting

Control Panel Unit Mounted LH Side

1



## Paralleling

Without

0

## 4-Relay Package

4-Relay Option

1

- The 4-relay board includes (4) 10 Amp form C relays customizable for user defined functionality requirements.
- Standard outputs are as follows:
- Engine Run
- Engine Fail
- Minor Alarm

## Remote E-Stop

Without

0

## ProtoNode Solution

Without

0

## Ground Fault Protection

Without

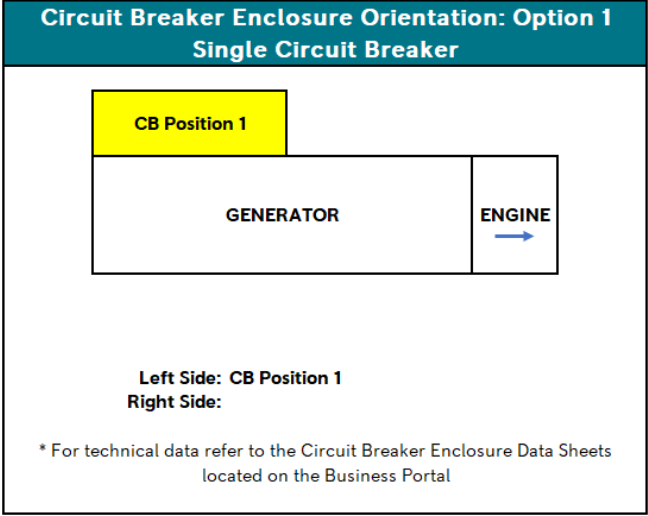
0

CIRCUIT BREAKER

Circuit Breaker 1

Circuit Breaker Position

Single CB Enclosure Orientation: Position 1 1



Trip Type LSI Breaker Trip 0

- LSI breakers provide protection from long time overload, short time overload and instantaneous short circuit events. Specific overload current values and time delays vary with breaker type and trip unit.

Rating 100% 0

Spring Charging Motor (MMM) Without 0

ERMS Without ERMS 0

Amperage List 100 Amps 1

Selected Circuit Breaker 1: 100 Amp 3 Pole 100% LSI CB SQ-D HDL36100CU33X 1

Service Entrance Rated Service Entrance Rated 1

Circuit Breaker 1 Accessories

Shunt Trip (MX1) Circuit Breaker SQ-D Shunt Trip (MX1) 1

Circuit Breaker 2



Spring Charging Motor (MMM)	Without	0
ERMS	Without ERMS	0
Circuit Breaker 3		
Spring Charging Motor (MMM)	Without	0
ERMS	Without ERMS	0
Distribution Panel		
Distribution Panel	Without	0
ENCLOSURE		
Housing		
Wind Rating	195 MPH	1
Enclosure Material	Level 3 Aluminum • Level 2 Aluminum 195 mph enclosure with air exhaust scoop with UL 94 HF-1 compliant, 1.5" thick sound attenuated foam insulation installed where applicable. * This option derates the Cooling Package to 45 °C.	1
Door Restraints	Door Restraints	1
PAINTING		
Painting		
Paint Color	Corporate Grey	1
BASEFRAME		
Mounts Baseframe		
Selected Vibration Isolation	Pad Isolators • 1/4" thick elastomeric pad in rectangular shape placed under the base frame at each of the pre-drilled isolator mounting holes • P/N: SUA63015	1

WARRANTY

Warranty		
Warranty Terms	2 Year 3000 Hour Standby Warranty	1

SHIPPING & STORAGE

Freight		
Shipping Bag	With Shipping Bag	1
Delivery Type	Ship Unit Wet	1

DOCUMENTATION

Manuals		
Standard Documentation	Manual English USB	1

FUNCTIONAL TESTING

Acceptance Testing		
Standard Commercial Test	With Standard Commercial Test	1